



936003
ALLDRY WALL N ROOF 10
Waterproof Coating

Alldry Wall n Roof 10 is an elastomeric coating that provides excellent waterproofing properties, high durability, and resistance to water penetration for exterior wall & terrace surfaces. The elastic crosslinking mechanism of the polymer along with the acrylic fibers gives additional reinforcement to the film.

PRODUCT BENEFITS



WATERPROOFING

Safeguards against Positive hydrostatic pressure of upto 10 Bar.*



CRACK BRIDGING

Highly Elastomeric coating provides Crack bridging of upto 2 mm.*



TEMPERATURE REDUCTION

Provides Excellent Surface Temperature reduction up to 10° C.*



WARRANTY

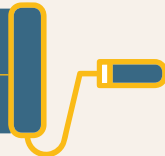
10 years* waterproofing warranty (Up to 10 years waterproofing warranty on exterior walls as well as terrace. The warranty on exterior walls will be applicable depending on the Birla Opus exterior topcoat used.**)

PRODUCT DETAILS

ESTIMATED FORCED COVERAGE

Exterior Walls: **Fresh painting: 2.32 sq.m/L**
Re-painting 2.79-3.25 sq.m/L

Horizontal (terrace, chajjas etc.):
10 sq.ft/L for 3 coats or 0.93 sq.m/L



Recommended usage – To be applied on RCC or plaster using brush or roller. It can be used on building roofs, terraces, parapet, sunshades and exterior vertical walls. It can be also be applied on IPS, sound brick bat coba or cementitious waterproofing.

AVAILABLE PACKS



COLOURS AVAILABLE

WHITE

DRYING TIME TO TOUCH



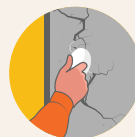
PROCESS TO APPLY

PRE-PAINTING STEPS/ SURFACE PREPARATION



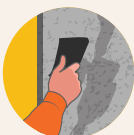
1. Plaster

Ensure that the freshly plastered surface or new masonry surface is completely cured for at least 28 days.



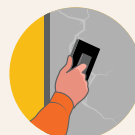
3. Repairing

Check the substrate for any internal spalling, delamination or voids using sounding technique. Substrate defects and cracks (>5mm) if any should be repaired with AllDry Repair Master.



2. Cleaning

Remove any plants or algae growing on terrace using wire brush or high-speed water jet to remove all the dirt, grease, loose paint or existing bitumen coating.



4. Filling of cracks

Cracks (up to 5mm width and 3mm depth) at corner joints, channels and parapets should be filled with AllDry Crack Master Paste.

The surface should be Surface Saturated Dry (SSD) before application of coating.

ALLDRY WALL N ROOF 10

	STEP	% DILUTION	RECOATING PERIOD	ESTIMATED FORCED COVERAGE
Horizontal Surface Application (3 coats application with effective coverage 10 sq ft/L or 0.93 sq.m/L)	Self-Priming Coat	35% with potable water	4-6 hours	3 coats application with effective coverage 10 sq ft/L or 0.93 sq.m/L)
	1 st Coat	Without Dilution	4-6 hours	
	2 nd Coat (Perpendicular to 1 st coat)	Without Dilution	4-6 hours	
Vertical Surface Application Fresh Painting: 2 coats application with effective coverage of 25 sq ft/L or 2.32 sq.m/L Repainting: 1 undiluted coat application with effective coverage 30-35 sq ft/L or 2.78-3.25 sq.m/L	Self-Priming Coat	35% with potable water	4-6 hours	Fresh Painting: 2 coats application with effective coverage of 25 sq ft/L or 2.32 sq.m/L Repainting: 1 coat application with effective coverage 30-35 sq ft/L or 2.78-3.25 sq.m/L
	1 st Coat	Without Dilution	4-6 hours	



POST PAINTING CARE

Conduct ponding test by filling water up to 5 cm height for 24 hours after 7 days of air curing to ensure leak-free terrace.

SAFETY MEASURES

- Kindly request for the MSDS, for detailed information on safety measures while handling the paint.
- The container must be stored in a cool, dry place with the lid tightly closed in an upright position.
- Keep it away from children and eatables.
- If swallowed, seek medical attention immediately.
- Always wear eye protection during application to avoid contact. Rinse immediately with plenty of water in case of accidental eye or skin contact and seek medical advice if irritation persists.
- The product is free of Lead, Mercury, Chromium, Arsenic and other heavy metal compounds.
- The left-over paint/drums must not be disposed of in soil or drains or water courses.

PRECAUTIONS

- Apply when ambient temperature is between 10°C - 45°C.
- Do not apply if the surface is wet or visibly damp or when humidity > 80%.
- Do not apply if rain is expected within 2 days post application.
- Clean with bleaching solution for surfaces having heavy algal infestation.
- To avoid water accumulation, the terrace surface must have an adequate slope.
- Apply an extra coat on all corners, gaps, joints, roof leak repair areas and outlets.
- The material must always be closed when not in use.
- Parapet walls, terrace and inside drainage pipes up to 6 inches must always have end-to-end application.
- Use glass fibre mesh (45 gsm) at areas with high movements or irregular substrate or to close cracks, joints and seams on the substrate. Always place it between the 1st and 2nd coat and when the 1st coat is still wet.
- The product is designed only for foot traffic. Do not use it for vehicular or movement of machinery or equipment.
- Do not tint the product.
- Surface temperature reduction properties are applicable only for un-tinted product, applied on horizontal surfaces, when the product is exposed to sunlight, and only when coating is done as per recommended application method.

TECHNICAL INFORMATION

Drying Time	4 to 6 hours
Appearance	Viscous liquid
Color	White
% Elongation	upto 250
Ponding Test	Passes
Crack Bridging Ability (mm)	Upto 2
Solar reflectance index	> 100
Resistance to Positive Hydrostatic pressure	Passes 10 bar
Shelf Life	36 months

*Surface temperature reduction: Temperature recorded from 1 pm to 3 pm with the help of IR gun. Degree of surface temperature reduction will vary depending upon the surface & weather conditions.

Version No. NSI001/02/2024.
Kindly note that this datasheet supersedes all preceding versions.
For more details, call at 18001201234 or write to opuscare@adityabirla.com
© Copyrighted content - all rights reserved