



## ALLDRY WALL N ROOF 12 Waterproof Coating

Alldry Wall n Roof 12 is a terrace waterproofing coating formulated with special elastomeric, tough acrylic polymers and PU hybrid polymers. The elastic crosslinking mechanism of the polymer along with the acrylic fibers gives additional reinforcement to the film providing excellent waterproofing warranty of up to 12 years.

### PRODUCT BENEFITS



#### WATERPROOFING

Safeguards against positive hydrostatic pressure of upto 12 Bar\* thus preventing water penetration into the film.



#### CRACK BRIDGING

Highly Elastomeric PU hybrid polymer provides crack-bridging of upto 3 mm.



#### TEMPERATURE REDUCTION

Provides Surface Temperature reduction upto 12°C.



#### WARRANTY

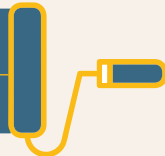
12 years\* waterproofing warranty  
(Upto 12 years waterproofing warranty on exterior walls as well as terrace. The warranty on exterior walls will be applicable depending on the Birla Opus exterior topcoat used.)

### PRODUCT FEATURES

#### ESTIMATED FORCED COVERAGE

Exterior Walls: **Fresh painting: 2.32 sq.mtr/L**  
**Re-painting 2.79-3.25 sq.mtr/L**

Horizontal (terrace, chajjas etc.):  
**10 sq.ft/L for 3 coats or 0.93 sq.m/L**



**Recommended usage** – To be applied on RCC or plaster using brush or roller. Can be used on building roofs, terraces, parapet, sunshades and exterior vertical walls. It can be applied on IPS, sound brick bat coba or cementitious waterproofing.

#### AVAILABLE PACKS



#### COLOURS AVAILABLE

**WHITE**

#### DRYING TIME TO TOUCH



### PROCESS TO APPLY

#### PRE-PAINTING STEPS/ SURFACE PREPARATION



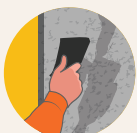
#### 1. Plaster

Ensure that the freshly plastered surface or new masonry surface is completely cured for at least 28 days.



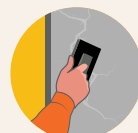
#### 3. Repairing

Check the substrate for any internal spalling, delamination or voids using sounding technique. Structural defects and cracks (>5mm) if any should be repaired with Alldry Repair Master.



#### 2. Cleaning

Remove any plants or algae growing on terrace using wire brush or high-speed water jet to remove all the dirt, grease, loose paint or existing bitumen coating.



#### 4. Filling of cracks

Cracks (upto 5mm) at corner joints, channels and parapets should be filled with Alldry Crack Master Paste or powder.

**The surface should be in Surface Saturated Dry (SSD) before application of coating.**

## ALLDRY WALL N ROOF 12

	STEP	% DILUTION	RECOATING PERIOD
<b>Horizontal Surface Application</b> (3 coats application with effective forced coverage 10 sq ft/L)	Self-Priming Coat	35% with portable water	4-6 hours
	1 <sup>st</sup> Coat	Without Dilution	4-6 hours
	2 <sup>nd</sup> Coat (Perpendicular to 1 <sup>st</sup> coat)	Without Dilution	4-6 hours
<b>Exterior Walls</b> (2 coats application with effective forced coverage 30-35 sq ft/L)	Self-Priming Coat	35% with portable water	4-6 hours
	1 <sup>st</sup> Coat	Without Dilution	4-6 hours



### POST PAINTING CARE

Conduct ponding test by filling water up to 5 cm height for 24 hours for 7 days of air curing to ensure leak-free terrace.

### SAFETY ASPECTS

- Kindly refer to the MSDS, which gives detailed information on safety measures while handling the paint, which is available on request.
- Store the container with the lid tightly closed in an upright position, in a cool, dry place.
- Keep out of reach of children and away from eatables.
- May be harmful if swallowed. In case of ingestion, seek immediate medical attention.
- Wear eye protection during application. In case of contact with eyes or skin, rinse immediately with plenty of water and seek medical advice if irritation persists.
- No added Lead, Mercury, Chromium, Arsenic and other heavy metal compounds.
- Left-over paint/drums should not be disposed in soil or drains or water courses.

### TECHNICAL INFORMATION

Drying Time	4 to 6 hours
Appearance	Viscous liquid
Color	White
% Elongation	Upto 300
Ponding Test	Passes
Crack Bridging Ability (mm)	Upto 3 mm
Solar reflectance index	>100
Resistance to Positive Hydrostatic pressure	Passes 12 bar
Shelf Life	36 months

(\*Surface temperature reduction: Temperature recorded from 1 pm to 3 pm with the help of IR gun, Degree of surface temperature reduction will vary depending upon the surface & weather condition)

### PRECAUTIONS

- Do not apply when ambient temperature is less than 10°C or above 45°C
- Do not apply on wet or visibly damp surfaces or when humidity > 80%
- Do not apply if rain is expected within 48 hours after application.
- For surfaces having heavy algal infestation, cleaning with bleaching solution is advised.
- Ensure that the terrace surface has adequate slope to avoid water accumulation.
- All corners, gaps, joints, roof leak repair areas & outlets shall be coated with extra coat.
- Keep the material closed when not in use.
- Ensure end to end application on parapet walls along with terrace and inside drainage pipes upto 6 inches.
- Glass fibre mesh (45 gsm) is recommended at areas with high movements or irregular substrate or to bridge cracks, joints and seams on the substrate. It must be sandwiched between 1st and 2nd coat and placed on surface when 1st coat is still wet.
- The product is designed only for foot traffic and not vehicular or movement of machinery or equipment.

Version No. NSI001/02/2024.

Kindly note that this datasheet supersedes all preceding versions.